

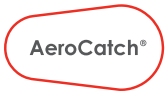
## AeroCatch® Panel Fasteners

- [AeroCatch Series Overview](#)
- [AeroCatch 120 Above Panel](#)
- [AeroCatch 125 Below Panel](#)
- [AeroCatch 220 Above Panel](#)
- [AeroCatch 225 Below Panel](#)
- [AeroCatch 320 Above Panel](#)
- [AeroCatch 325 Below Panel](#)
- [AeroCatch 350 Above Panel/Pocket](#)



# AeroCatch Panel Fasteners

AEROCATCH SERIES OVERVIEW



Shear pin latch with adjustable strike pin. Above & below panel fixing. Xtreme option with steel strike pins.

## AEROCATCH®

PART NUMBER	DESCRIPTION
120-2000	Above Panel Non-Locking
120-2100	Above Panel Locking
125-2000	Below Panel Non-Locking
125-2100	Below Panel Locking



## AEROCATCH®

PART NUMBER	DESCRIPTION
120-4000	Above Panel Non-Locking Xtreme
120-4100	Above Panel Locking Xtreme
125-4000	Below Panel Non-Locking Xtreme
125-4100	Below Panel Locking Xtreme

### Key Features

- Above & Below Panel
- Simple installation
- Aluminium strike pins (steel with Xtreme)
- Lightweight, high strength
- Corrosion resistant and UV stable
- Top or side mounting
- Handle visible if not closed correctly
- Non trip hazard in closed position



Extended shear pin provides shoot bolt locking into prepared frame.

## AEROCATCH®

PART NUMBER	DESCRIPTION
220-2000	Above Panel
225-2000	Below Panel



### Key Features

- Above & Below Panel Options
- Simple Installation
- Marine grade stainless steel hardware
- Lightweight, high strength
- Corrosion resistant and UV stable
- Handle visible if not closed correctly
- Non trip hazard in closed position



### AeroCatch®

High strength shear and tension latch for drawing together panels.

**AEROCATCH®**

PART NUMBER	DESCRIPTION
320-2000	Above Panel
325-2000	Below Panel



**Key Features**

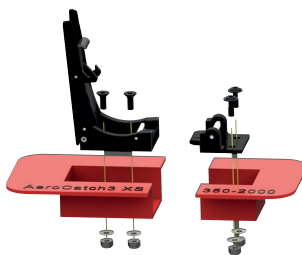
- Above & Below Panel Options
- Shear and tension latch carries loads in 3 axes
- Lightweight hard anodised aluminium
- Hold-out handle
- Aerodynamic
- Simple release with secondary lock
- Easy installation
- Symmetrical latch and strike housings
- Factory set tension
- Non trip hazard in closed position

### AeroCatch® XS

Compact, high strength tension latch for drawing together panels.

**AEROCATCH®**

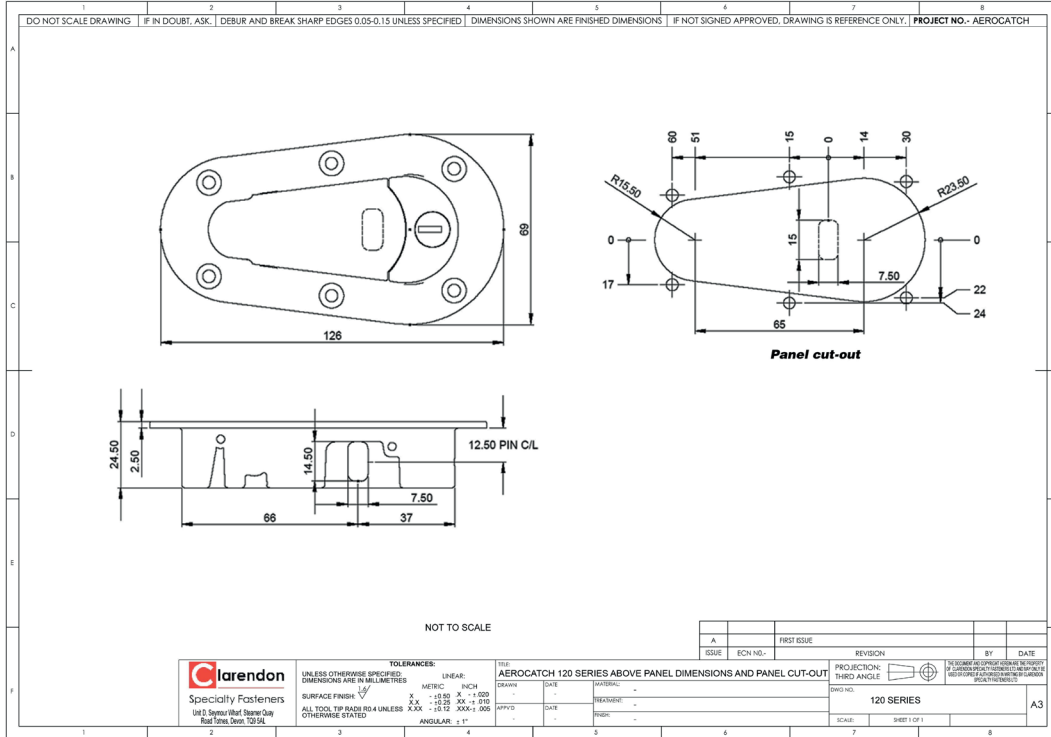
PART NUMBER	DESCRIPTION
350-2000	Above Panel / Pocket
350-1000	AeroCatch3XS Above Panel / Pocket Single



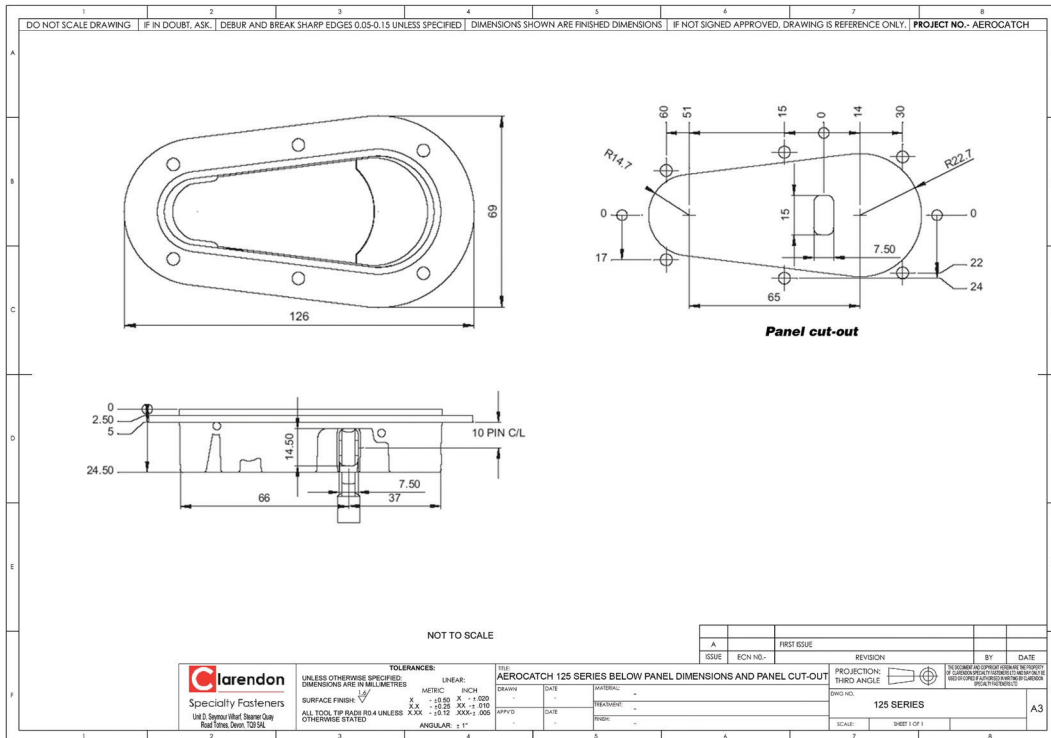
**Key Features**

- Above Panel / Pocket Mounting
- Small compact design
- Shear and tension latch carries loads in 3 axes
- Lightweight hard anodised aluminium
- Hold-out handle
- Aerodynamic
- Simple release with secondary lock
- Factory set tension

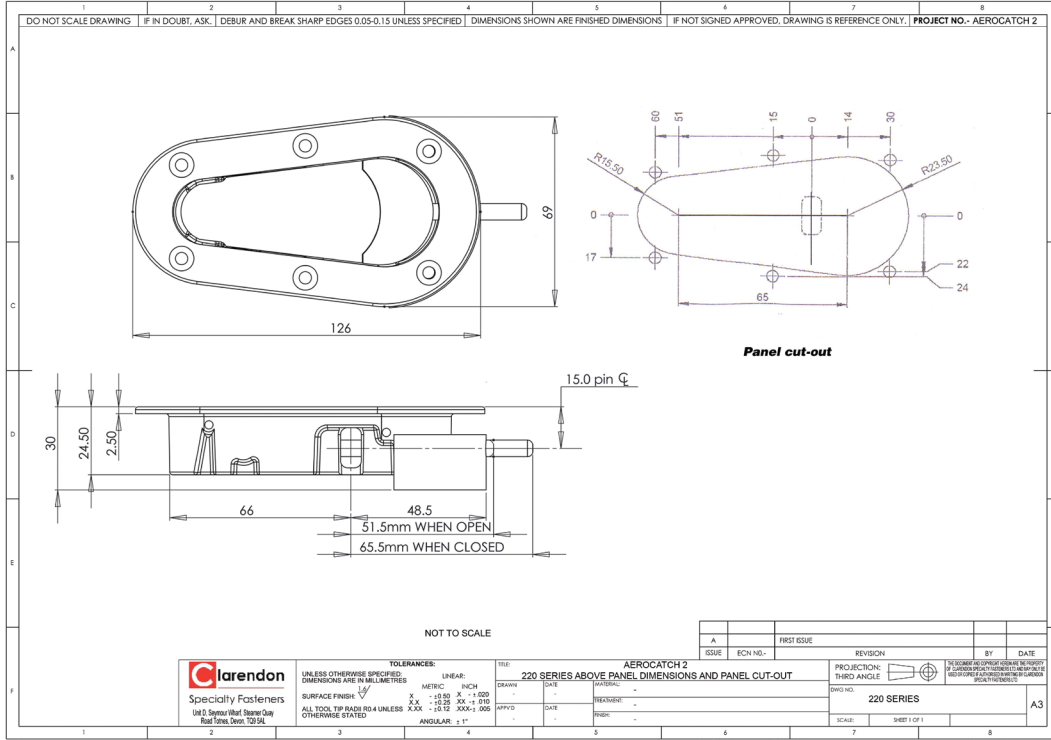
### AeroCatch 120 Above Panel



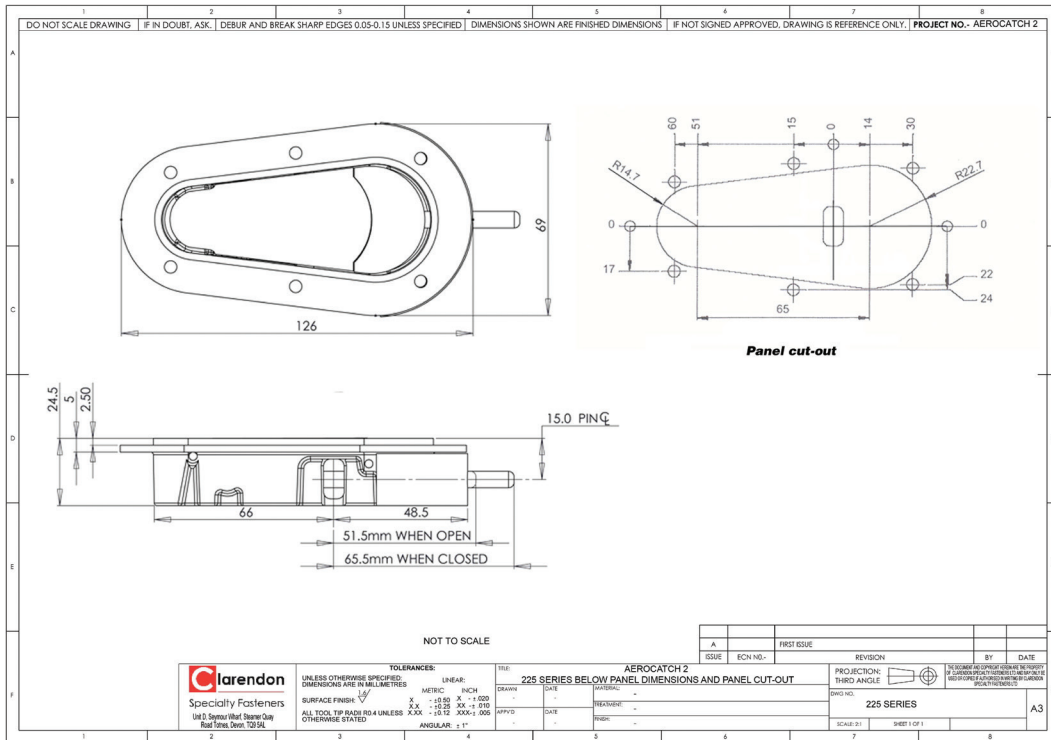
### AeroCatch 125 Below Panel



### AeroCatch 220 Above Panel



### AeroCatch 225 Below Panel

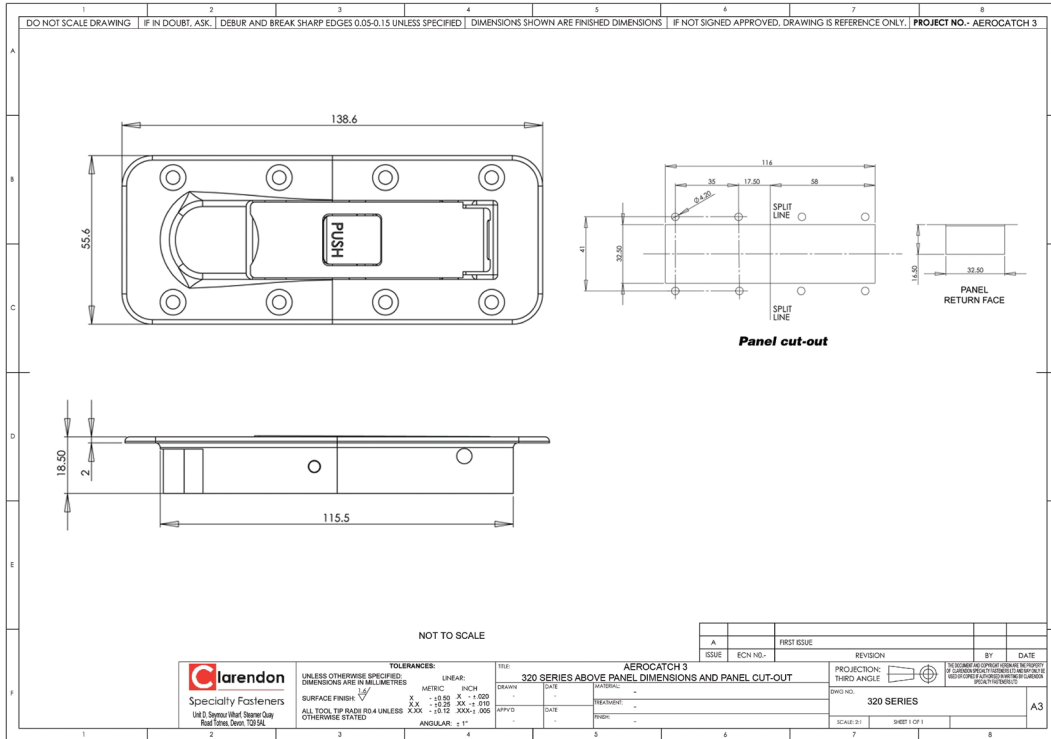


# AeroCatch Panel Fasteners

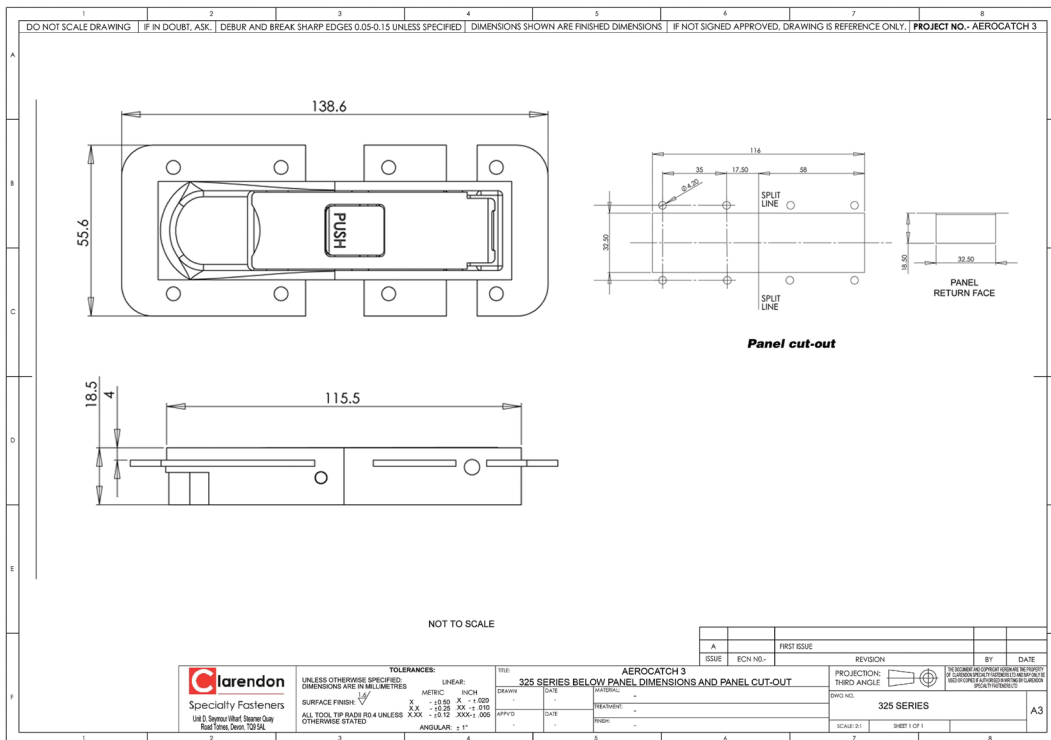
AEROCATCH 3 SERIES



## AeroCatch 320 Above Panel



## AeroCatch 325 Below Panel



### AeroCatch 350 Above Panel /Pocket

